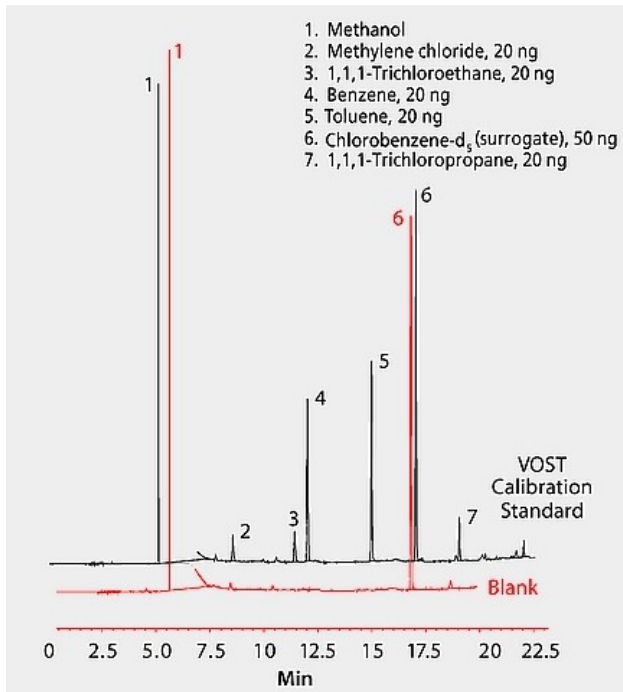


## US EPA Method 0030: GC Analysis of Volatiles on SPB®-624 after Collection/Desorption using VOST 100 Tube



### Conditions

adsorbent tube	VOST 100 (20074-U)
purge trap	VOCARB 4000 (20308)
column	SPB-624, 75 m x 0.53 mm I.D., 3.0 µm film (25432)
oven	35 °C (5 min) to 200 °C at 10 °C/min, hold 2 min
carrier gas	helium, 8 mL/min
sample	calibration standard: volatiles in methanol; blank: Tenax TA tube with surrogate thermally desorbed into purge & trap system
detector	FID, 300 °C

### Description


Categories	Analytical Chromatography, GC Applications, Air Monitoring Applications, Volatiles
Featured Industry	Environmental Industrial Hygiene
General description	<b>This is an application, not a product for sale.</b> See "Related Products" to find associated products for sale.
Legal Information	SPB is a registered trademark of Sigma-Aldrich Co. LLC
Other Notes	<b>Complementary products:</b> <a href="#">Syringes</a> <a href="#">Vials</a> <a href="#">Gas Purification and Gas Management</a> <a href="#">Inlet Liners, Glass Wool, and Specialized Hand Tools</a> <a href="#">Septa and Specialized Hand Tools</a> <a href="#">Column Ferrules, Nuts, and Specialized Hand Tools</a>
suitability	application for air monitoring, application for GC

### Analyte

- 1,1,1-Trichloroethane
- 1,1,1-Trichloropropane

- Benzene
- Chlorobenzene-d5
- Methanol
- Methylene chloride
- Toluene

## Materials

Product #	Image	Description
CRM48617		Benzene solution certified reference material, <i>TraceCERT</i> <sup>®</sup> , 200 µg/mL in methanol
02575	CH <sub>2</sub> Cl <sub>2</sub>	Dichloromethane analytical standard
48600	CH <sub>2</sub> Cl <sub>2</sub>	Dichloromethane solution certified reference material, 200 µg/mL in methanol
PHR1372	CH <sub>3</sub> OH	Methanol Pharmaceutical Secondary Standard; Certified Reference Material
1424109	CH <sub>3</sub> OH	Methyl alcohol United States Pharmacopeia (USP) Reference Standard
PHR1557	CH <sub>2</sub> Cl <sub>2</sub>	Methylene Chloride Pharmaceutical Secondary Standard; Certified Reference Material
20308		Purge/Trap I Vocab <sup>®</sup> 4000 configured for Tekmar Velocity XPT, LSC-1, LSC-2, LSC-2000, 4000 (Straight, 12 in./30.5 cm, Swagelok fitting), HT-3
20074-U		VOST Stack Sampling Tube matrix Tenax TA porous polymer, 35-60 mesh